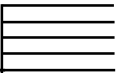


# Sequence in Blue



Rolf Enström

1978

9' 10"

Sequence in Blue is a fine example of Enström's genuine feeling for sonority and form.

Commissioned by the Swedish Radio Corp. in 1978, the work was composed during the same period as "MYR"

(Mire) and is concentrated reworking of the themes found in the multi-media work. The piece opens with a low growing sound which fades out, returns and dies again.

The sound materials for "Sequence in Blue" are derived from this opening sonority and have in turn been transformed, modified and mixed.

These fade away in a long, final sound - a theme which is analogous to the slide (visuals) material in "Myr". The musical material is limited and markedly melodic.

Thomas Hellising

# Sequence in Blue



Rolf Enström

1978

9' 10"

Sequence in Blue is a fine example of Enström's genuine feeling for sonority and form.

Commissioned by the Swedish Radio Corp. in 1978, the work was composed during the same period as "MYR"

(Mire) and is concentrated reworking of the themes found in the multi-media work. The piece opens with a low growing sound which fades out, returns and dies again.

The sound materials for "Sequence in Blue" are derived from this opening sonority and have in turn been transformed, modified and mixed.

These fade away in a long, final sound - a theme which is analogous to the slide (visuals) material in "Myr". The musical material is limited and markedly melodic.

Thomas Hellising